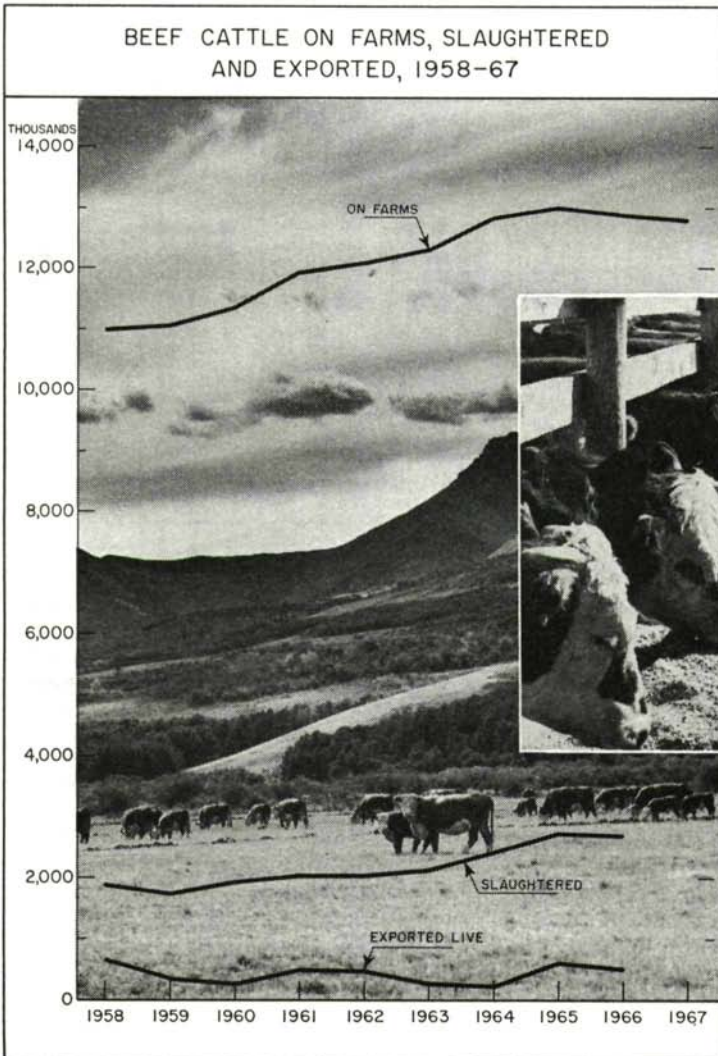
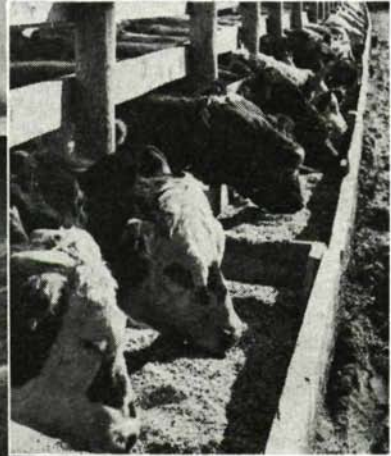


The sheep-raising industry in Canada continued to decline in 1966. The number of sheep on farms at June 1 was 1,094,000, a decrease of more than 6 p.c. from the 1965 figure of 1,169,000. Live animals exported numbered 10,530 only about one half the number exported in 1965; imports, however, increased slightly from 18,284 to 19,465 in the same comparison. Sheep and lamb slaughterings in inspected plants were 20 p.c. lower than in the previous year.

Per capita disappearance of all red meats in 1966 was estimated at 148.8 lb., 1.2 lb. less than in 1965. The figures for individual meats were: beef 82.7 (81.7 in 1965); pork 47.7 (49.2); veal 7.0 (8.4); mutton and lamb 3.6 (2.8); offal 3.6 (3.6); canned meats 4.2 (4.3). All figures are on a cold dressed basis.



*Both demand and prices for choice cattle were favourable in 1967.*



*By the end of October, 70,000 more cattle in the two top grades had been marketed than in the same period of 1966 and at prices considerably higher than the export basis.*